

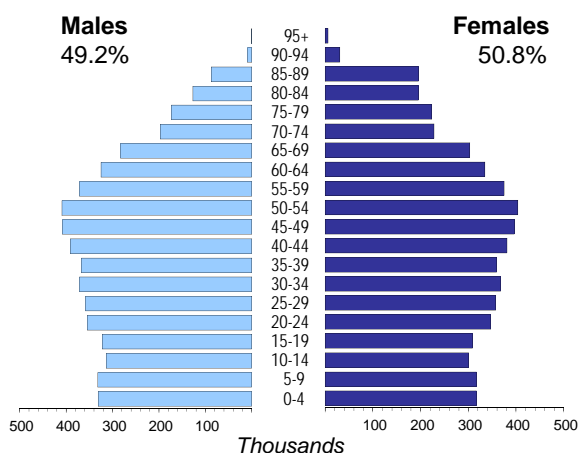


BELGIUM

Capital (population in thsd, 2016)	Brussels (1188)
Area (km²)	30 528
Total population (thsd, 2014)	11 231
Population density (per km²)	368
National currency	Euro (EUR)
National statistical office	
e-General Statistics and Economic Information (Statistics Belgium)	
www.statbel.fgov.be	

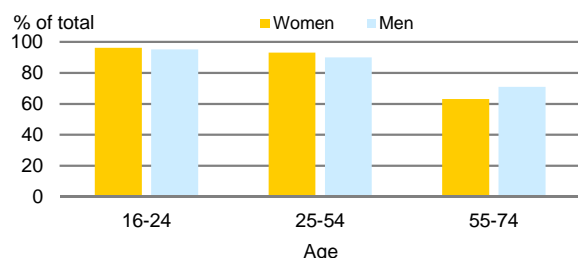


Population by age, 2014



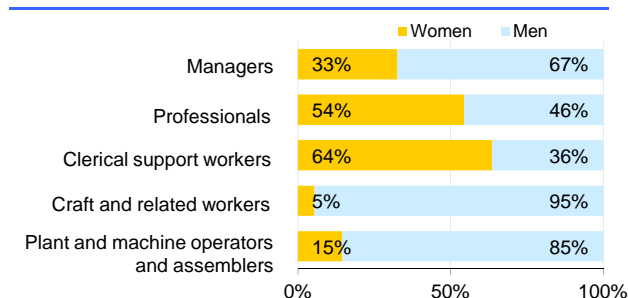
Life expectancy (in years)	at birth		at 65
	2014	2014	2014
Males	78.8	18.4	
Females	83.9	21.9	
Total fertility rate, 2014			1.7
average number of children per woman			
Adolescent fertility rate, 2014			6.9
number of live births per 1,000 women aged 15-19			
Mean age of women at birth of first child, 2014			28.6
age in years			

Computer use by age and sex, 2015

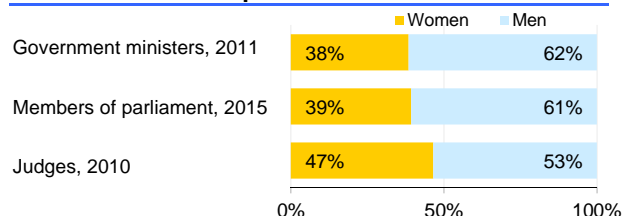


Women in the labour force, 2015	46%
percentage of total for both sexes	
Gender pay gap	
monthly earnings, 2014	22%
hourly wage, 2014	10%
Women in part-time employment, 2015	42%
percentage of total of women employed	
Female tertiary students, 2013	56%
percentage of total for both sexes	
Women victims of homicide	..
percentage of total for both sexes	
Women researchers, 2013	33%
percentage of total for both sexes	

Women and men in selected occupation groups, 2015



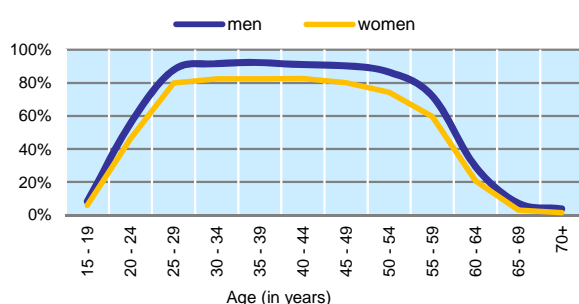
Women and men in public life



BELGIUM

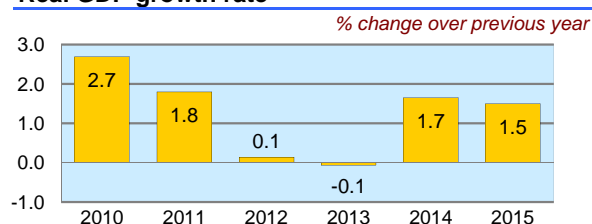
	2010	2011	2012	2013	2014	2015
Employment (% change over previous year)	0.6	1.4	0.4	-0.4	0.3	0.9
Unemployment rate (%)	8.3	7.2	7.6	8.4	8.5	8.5
Youth unemployment rate (%)	22.4	18.7	19.8	23.7	23.2	..

Economic activity rate, 2015

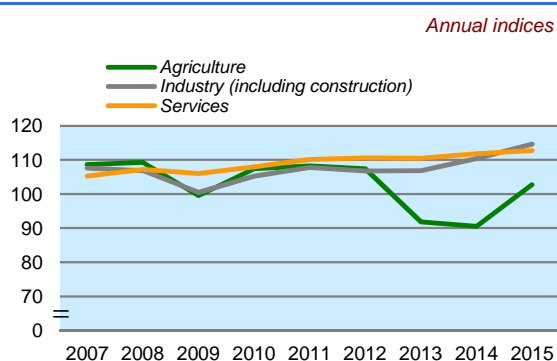


	% of GDP
Exports of goods and services, 2015	82.9
Imports of goods and services, 2015	81.3
External trade balance, 2015	1.7

Real GDP growth rate



GDP in agriculture, industry, services (2005=100)



Forest resources

Area of forest	
percentage of land area, 2015	22.8

Road accidents

Persons injured	
in road accidents, 2013	46 671
Persons killed	
in road accidents, 2013	723

GDP at current prices

millions of US Dollars, PPP, 2015	497 622
millions of EUR, 2015	410 351

GDP at current prices, per capita

US Dollars, PPP, 2015	44 383
EUR, 2015	36 599

Final consumption expenditure at current prices, per capita

US Dollars, PPP, 2015	33 340
-----------------------	--------

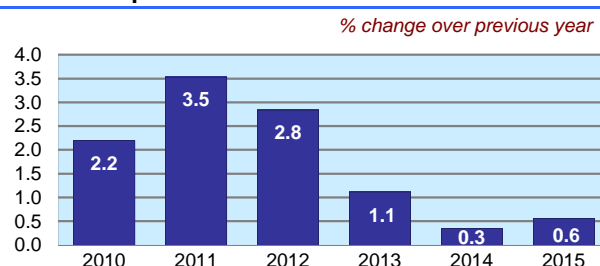
Purchasing Power Parity (PPP)

EUR per USD, US=1, 2015	0.825
-------------------------	-------

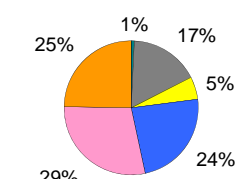
Exchange rate

Annual average, EUR per USD, 2015	0.902
-----------------------------------	-------

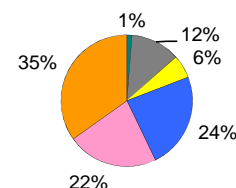
Consumer price index



GDP by major sectors, 2015



Employment in major sectors, 2015



- Agriculture, forestry and fishing (ISIC 4 A)
- Manufacturing, mining and quarrying, energy and water supply (ISIC 4 B-E)
- Construction (ISIC 4 F)
- Wholesale and retail trade, transportation, accommodation and food, communication activities (ISIC 4 G-J)
- Financial, insurance, real estate and other business service activities (ISIC 4 K-N)
- Public administration and defence, education, health and other service activities (ISIC 4 O-U)

Transport infrastructure

Railways	
total length in kilometres, 2009	3 578
Motorways	
total length in kilometres, 2010	1 763