

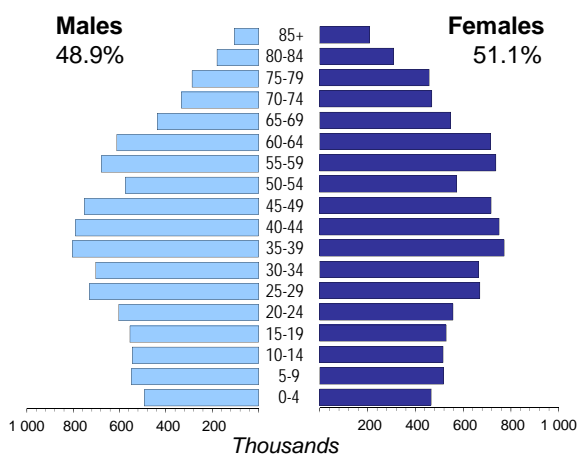


# ROMANIA

<b>Capital (population in thsd, 2015)</b>	Bucharest (1853)
<b>Area (km<sup>2</sup>)</b>	238 391
<b>Total population (thsd, 2014)</b>	19 909
<b>Population density (per km<sup>2</sup>)</b>	84
<b>National currency</b>	Romanian new leu (RON)
<b>National statistical office</b>	National Institute of Statistics <a href="http://www.insse.ro">www.insse.ro</a>



## Population by age, 2014

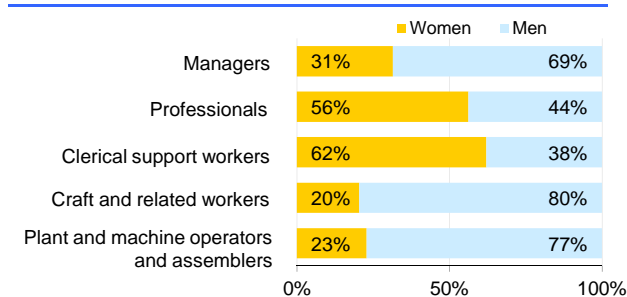


<b>Women in the labour force, 2015</b> percentage of total for both sexes	43%
<b>Gender pay gap</b> monthly earnings, 2015 hourly wage, 2014	7% 5%
<b>Women in part-time employment, 2015</b> percentage of total of women employed	11%
<b>Female tertiary students, 2013</b> percentage of total for both sexes	54%
<b>Women victims of homicide, 2010</b> percentage of total for both sexes	38%
<b>Women researchers, 2013</b> percentage of total for both sexes	46%

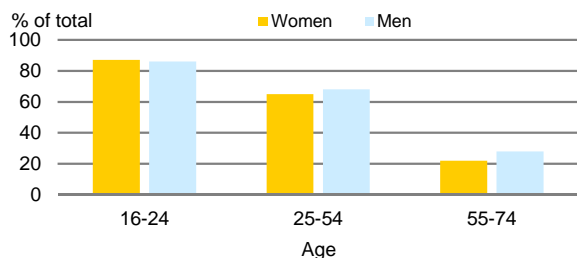
<b>Life expectancy (in years)</b>	at birth	at 65
	2014	2014
<b>Males</b>	71.4	14.7
<b>Females</b>	78.7	18.1

<b>Total fertility rate, 2014</b> average number of children per woman	1.5
<b>Adolescent fertility rate, 2014</b> number of live births per 1,000 women aged 15-19	35.3
<b>Mean age of women at birth of first child, 2014</b> age in years	26.1

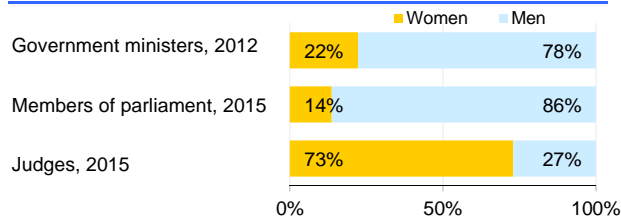
## Women and men in selected occupation groups, 2015



## Computer use by age and sex, 2015



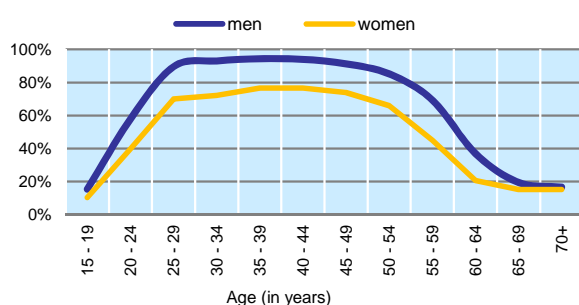
## Women and men in public life



# ROMANIA

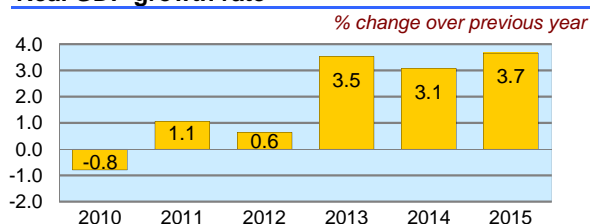
	2010	2011	2012	2013	2014	2015
Employment (% change over previous year)	-0.3	-0.8	-4.8	-0.9	0.8	-0.9
Unemployment rate (%)	7.0	7.2	6.8	7.1	6.8	6.8
Youth unemployment rate (%)	22.1	23.9	22.6	23.7	24.0	..

## Economic activity rate, 2015

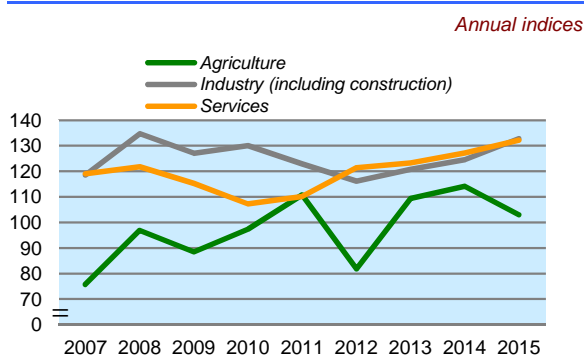


	% of GDP
Exports of goods and services, 2015	41.1
Imports of goods and services, 2015	41.6
External trade balance, 2015	-0.5

## Real GDP growth rate



## GDP in agriculture, industry, services (2005=100)



## Forest resources

Area of forest	
percentage of land area, 2015	29.9

## Road accidents

Persons injured	
in road accidents, 2013	31 464
Persons killed	
in road accidents, 2013	1 861

## GDP at current prices

millions of US Dollars, PPP, 2015	424 474
millions of RON, 2015	712 832

## GDP at current prices, per capita

US Dollars, PPP, 2015	21 417
RON, 2015	35 966

## Final consumption expenditure at current prices, per capita

US Dollars, PPP, 2015	16 050
-----------------------	--------

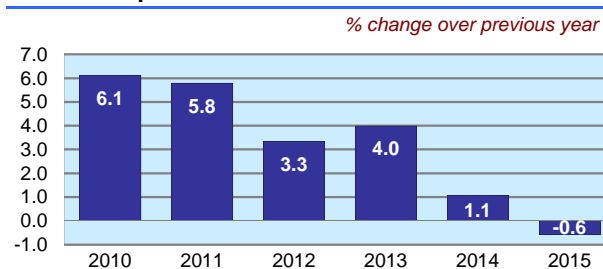
## Purchasing Power Parity (PPP)

RON per USD, US=1, 2015	1.679
-------------------------	-------

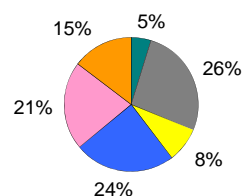
## Exchange rate

Annual average, RON per USD, 2015	4.008
-----------------------------------	-------

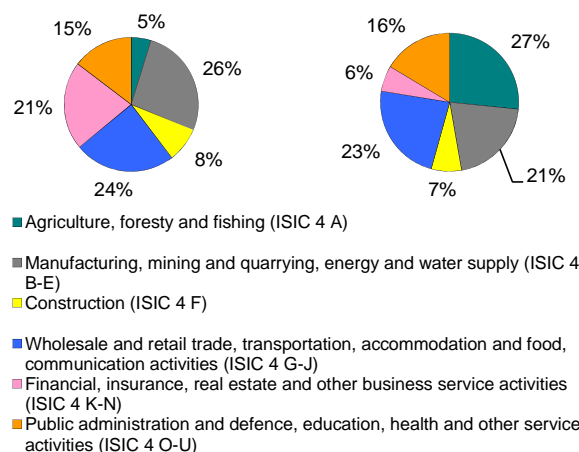
## Consumer price index



## GDP by major sectors, 2015



## Employment in major sectors, 2015



## Transport infrastructure

Railways	
total length in kilometres, 2013	10 768
Motorways	
total length in kilometres, 2013	644